



stylish

Elegant on the outside,
smart in the inside.



stylish

You deserve
a premium climate.

Stylish is a combination of excellent design & intelligent technologies that delivers the ultimate climate solution for any interior. Thanks to its small volume, Stylish is the most compact unit in the wall mounted design segment delivering top efficiencies, the highest level of comfort, reliability and smart control.



Start your journey

Explore a galaxy of new features:

● Choose between 3 fantastic colours

page 4

● Enjoy design for new lifestyle

page 5

● Technology meets design for
a premium climate solution

page 6-7

● A closer look inside Stylish, and the
technologies at work

page 8-11

● Control your unit in a smart way

page 12-13

● Technical data at a glance

Page 14-15



White



Silver



Blackwood



Design new lifestyles and enjoyable atmosphere

Easy to integrated into your individual space.

A household room air conditioner creates the atmosphere of the room year-round as part of the interior design. When summer comes around, the first moment when you turn on the cooling function on your online controller you may find a fantastic sensation will light you immediately up.



Stylish's silhouette can be expressed as both linear and rounded - it can be perceived in different ways depending on the person's visual angle. It is not a self-conclusive design and this versatility makes the final picture completed only when it is integrated into the individually-varied customer space.

We focused on a more appealing appearance, but we will also continue to design new lifestyles that make you look forward to the moments when you use the air conditioner.

You can now choose from three distinct colours

The concept colour panels were crafted as a result of our study on the diverse experience values that people enjoy in their living spaces: relaxing, focusing, and having fun. This selection offers a wider range of colour-texture combination to cater to the different ways people live.



White

Silver

Blackwood

The most compact design unit

The composition of the frame parts integrally expresses "lightness" in its shape, creating a comfortable living space. The feeling of "lightness" is also achieved with thin dimensions, which make Stylish the most compact design unit on the market.



Intelligent and
efficient design



To create an innovative wall mounted unit, Daikin uses in-house technologies to ensure the best performance and reliable operation.



Technology meets design for a premium climate solution

Are you looking for an air conditioner that combines contemporary art with state of the art technologies? Stylish balances function and aesthetic in a way that brings comfort to the next level.

Your benefits

- › Perfect room temperature & air distribution
- › Unbelievably quiet operation
- › A+++ energy label for cooling & heating in almost all sizes
- › Fresh, pure air

How we do it

- › State of the art sensors & airflow technologies
- › Completely redesigned flaps
- › Completely redesigned fan
- › 3 different air purification filters

When you choose Stylish, you are choosing a winner

Stylish earned the Good Design Award for its innovative look and functional capabilities.

This award recognises Stylish for its ability to achieve new standards of comfort and energy efficiency.



The designer of Stylish

The revolutionary ideas of Japanese designer [Naoki Sakai](#), have made him an industry powerhouse. He became famous designing popular cars for Nissan, SW-1 motorbike for Suzuki and the model for Toyota's Will concept car.



Not only does he work with the auto industry, he's helped develop Olympus' O-Product, the camera that made the aluminium body a world standard; mobile phones for au by KDDI; and sofas for Cassina.

Naoki Sakai shares:

"Design is ideology. Through it we can change society. My goal is to improve society via happy design."

A closer look
inside Stylish, and
the technologies at work



Experience the ultimate comfort

A closer look inside Stylish, and the technologies at work



With more than 90 years of experience in air conditioning and climate control solutions, Daikin knows how to combine the best of design and technology to help you achieve your perfect climate.



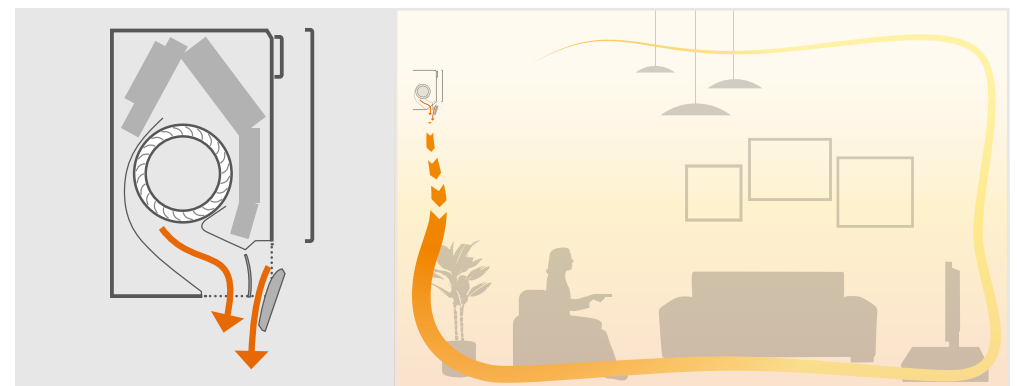
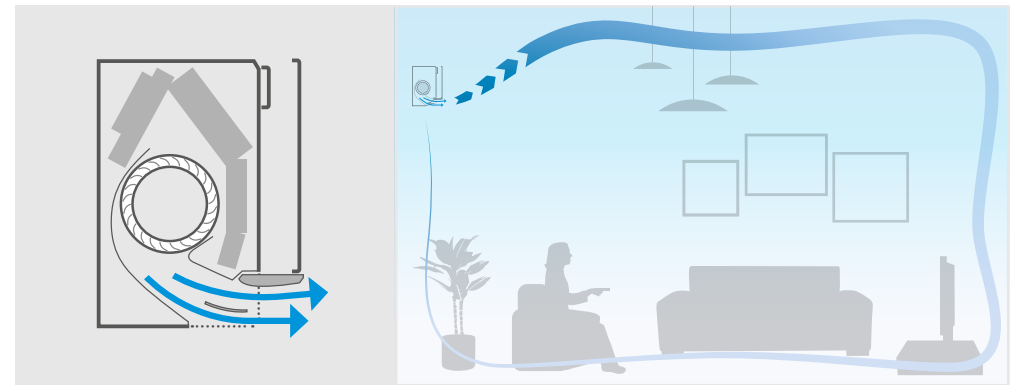
The Coanda effect

With its redesigned flaps Stylish uses the so-called "Coanda effect" that ensures perfect air & temperature distribution in the whole room.

How it works?

Stylish determines the airflow pattern based on whether the room needs heating or cooling. When Stylish is in heating mode, two flaps will direct air downward (vertical airflow), while in cooling mode the flaps will move air upward (ceiling airflow).

By creating two different airflow patterns, Stylish prevents draughts and establishes a more stable and comfortable room temperature for occupants.



The Coanda effect creates two different airflow patterns depending on whether Stylish is in cooling or heating mode. On the top is the Coanda effect in cooling mode (ceiling airflow), while the bottom images demonstrate the Coanda effect in heating mode (vertical airflow).



Stable room temperatures

Stylish uses a specially designed **Grid Eye sensor** that detects the temperature differences of various surfaces like the floor and walls and uses this information to intelligently distribute the temperature evenly in your room.

The grid eye sensor measures the surface temperature of a room by dividing it into a grid with 64 different squares.

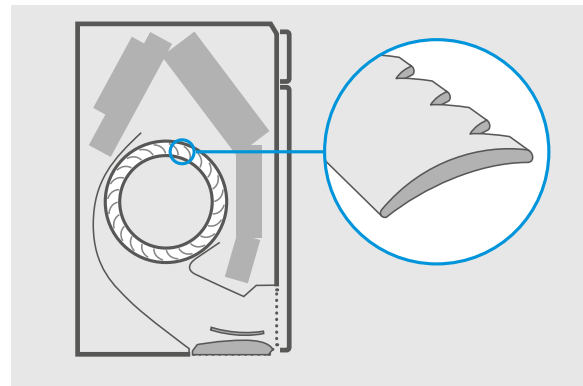


After determining the current room temperature, the Grid Eye Sensor distributes air evenly throughout the room before switching to an airflow pattern that directs warm or cool air to areas that need it.

Exceptionally quiet

Stylish uses a **completely redesigned fan** to optimise airflow to reach higher energy efficiency with the lowest sound levels, making you home a perfect place to rest and relax.

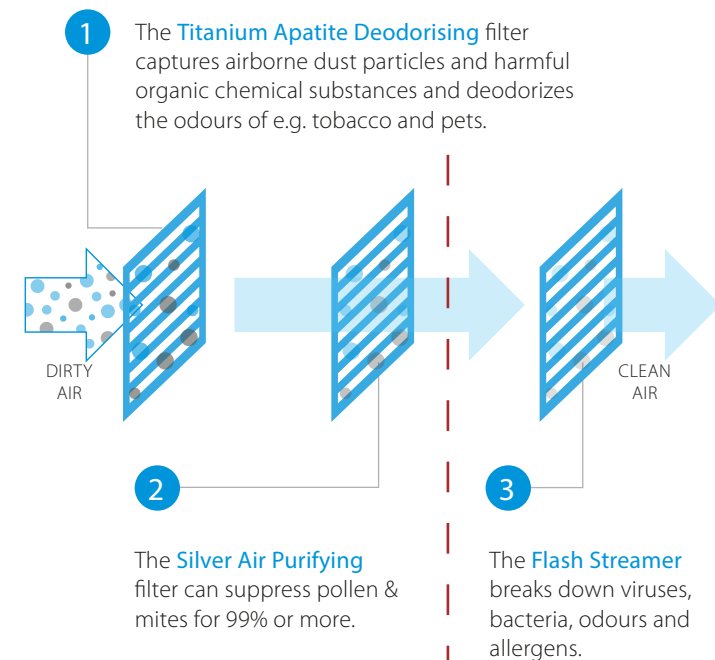
Sound dispersion and noise reduction are the results of a new fan design.



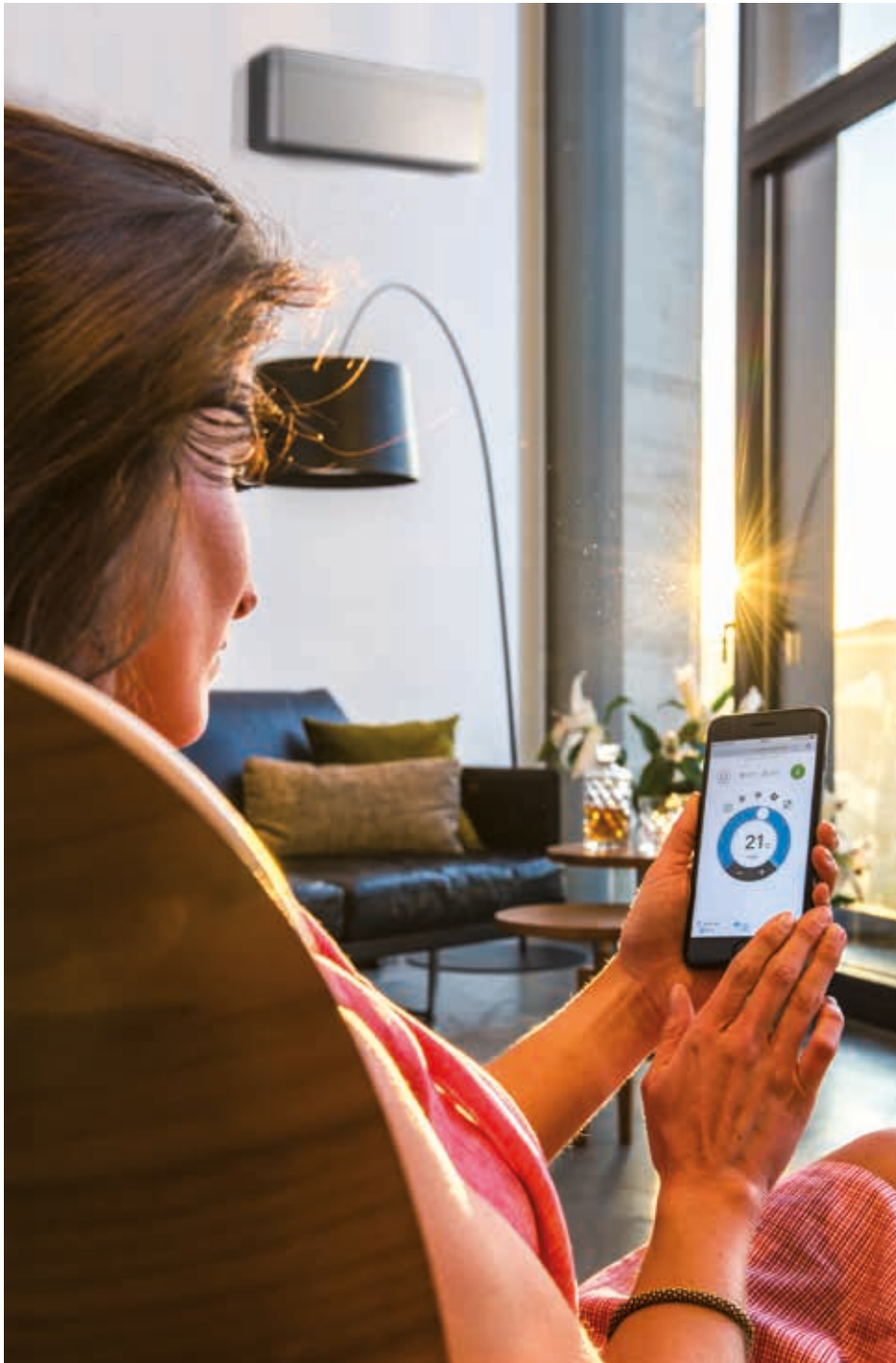
To achieve higher energy efficiency, Daikin designed a new fan that runs efficiently within Stylish's compact dimensions. Combined the fan and heat exchanger attain top energy performance, but operate at a sound level that is practically inaudible to occupants.

The freshest, purest air

Stylish provides the best possible indoor air quality using 3 different air filtration systems:



Note: Flash Streamer must be activated manually from remote controller



Always in control, no matter where you are



Daikin Online Controller

You can also manage Stylish using your smartphone. Simply connect to Wi-Fi and download the Daikin Online Controller app to begin creating your perfect climate.

Your benefits

- › Access several features to control your climate
- › Manage the temperature, operating mode, air purification and fans with interactive thermostat
- › Create different schedules and operation modes
- › Monitor energy consumption
- › Compatible with the If This Then That (IFTTT) app

Monitor:

- > The status of your air conditioner
- > Consult **energy consumption graphs**



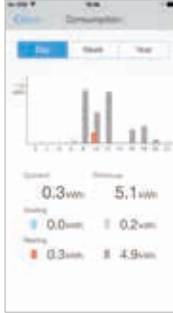

Control:

- > The **operation mode**, set temperature, fan speed and powerful mode, air direction and filtering (streamer) function
- > Remotely control your system
- > **Zone control**: control **multiple** units at once

Schedule:

- > Schedule the set temperature and operation mode with up to **6 actions per day for 7 days**
- > Enable **holiday mode**
- > View in an intuitive mode
- > 3rd party products & services integration via IFTTT
- > Demand control/power power limitation

App with intuitive layout

Control	Schedule	Monitor	Identify
			
Control operation mode, temperature, air purification, fan speed & direction	Schedule the set temperature, operation mode and fan speed	Monitor your energy consumption, set holiday schedule	Identify the rooms in your house



IFTTT: make your work flow

IFTTT is a solution that connects compatible 3rd party products and services (smart meters, lights, thermostats, ...), so they work best for you.

Within IFTTT, 2 operation set-ups can be made:

- > **DO**: it simply executes an action (e.g.: on/off)
- > **IFTTT** stands for If This Then That and allows you to automate actions (Then That) depending on certain triggers (If This)

Example



The **trigger** is location, which is determined by your smartphone. If you leave an area, such as your office for example, the **cooling** at your home will turn on automatically.



Available
in 3 colours:
white, silver and
blackwood

Functional and stylish

for any space



White: FTXA-AW



Silver: FTXA-AS



Blackwood: FTXA-AT

Stylish advantages

- › A compact and functional design suitable for all interiors
- › 3 elegant colours: white, silver, blackwood
- › Up to A+++ label for heating and cooling
- › Titanium apatite + Silver allergen removal air purifying filters
- › Flash Streamer technology for fresh, healthy air
- › Redesigned fan ensures barely audible operation
- › Grid Eye sensor & Coanda airflow provide perfect temperature & air distribution
- › Integrated Wi-Fi adapter for easy smartphone control
- › Works in pair & multi application
- › Wide variety of capacities from 1,5 to 5,0 kW



Grid Eye sensor



Perfect airflow



Unbelievably silent



Flash Streamer



2 air filters



Pair & multi use



Wi-Fi control

Technical data

Efficiency data				FTXA + RXA	15AS/AW/AT	20AS/AW/AT + 20A	25 AS/AW/AT + 25A	35AS/AW/AT + 35A	42AS/AW/AT + 42A	50AS/AW/AT + 50A
Cooling capacity	Nom.		kW			2,00	2,50	3,40	4,2	5
Heating capacity	Nom.		kW			2,50	2,80	4,00	5,4	5,8
Power input	Cooling	Nom.	kW			-	-	-	-	-
	Heating	Nom.	kW			0,50	0,56	0,99	1,31	1,45
Seasonal efficiency (according to EN14825)	Cooling	Energy efficiency class			Connectable to multi outdoor units only	A+++	A+++	A+++	A++	A++
		Pdesign		kW		2,00	2,50	3,40	4,2	5
		SEER				8,75	8,74	8,73	7,5	7,33
	Annual energy consumption		kWh	80		100	136	196	239	
	Heating (Average climate)	Energy efficiency class				A+++	A+++	A+++	A++	A++
		Pdesign		kW		2,40	2,45	2,50	3,8	4
SCOP/A			5,15	5,15	5,15	4,6	4,6			
Annual energy consumption		kWh	652	666	679	1.156	1.217			
Nominal efficiency	EER				4,57	4,46	3,75	3,75	3,68	
	COP				5,00	5,00	4,04	4,12	4	

Indoor unit				FTXA	15 AS/AW/AT	20AS/AW/AT	25AS/AW/AT	35AS/AW/AT	42AS/AW/AT	50AS/AW/AT
Dimensions	Unit	Height x Width x Depth		mm	295 x 798 x 189					
Weight	Unit			kg	13					
Air filter	Type				Removable / washable / mildew proof					
Fan – Air flow rate	Cooling	Silent operation / Low / Medium / High / Super high		m ³ /min	4,6 / 6,1 / 8,2 / 11,0 / 11,9	4,6 / 6,1 / 8,2 / 11,0 / 11,9	4,6 / 6,1 / 8,6 / 11,5 / 12,4	4,6 / 6,1 / 8,6 / 11,9 / 12,9	4,6 / 7,2 / 9,8 / 13,1 / 14,1	5,2 / 7,6 / 10,4 / 13,5 / 14,4
	Heating	Silent operation / Low / Medium / High / Super high		m ³ /min	4,5 / 6,4 / 8,7 / 10,9 / 11,9	4,5 / 6,4 / 8,7 / 10,9 / 11,9	4,5 / 6,4 / 9,0 / 11,1 / 12,1	4,5 / 6,4 / 9,0 / 11,5 / 12,5	5,2 / 7,7 / 10,5 / 14,6 / 15,6	5,7 / 8,2 / 11,1 / 15,1 / 16,1
Sound power level	Cooling			dB(A)	57	57	57	60	60	60
Sound pressure level	Cooling	Silent operation / Low / Medium / High / Super high		dB(A)	19 / 25 / 32 / 39	19 / 25 / 32 / 39	19 / 25 / 33 / 40	19 / 25 / 33 / 41	21 / 29 / 37 / 45	24 / 31 / 39 / 46
Power supply	Phase / Frequency / Voltage			Hz/V	1~ / 50 / 220-240					

Outdoor unit				RXA	20A	25A	35A	42A	50A		
Dimensions	Unit	Height x Width x Depth		mm	550 x 765 x 285				735 x 825 x 300		
Weight	Unit			kg	32				47		
Sound power level	Cooling			dB(A)	59	59	61	62			
Sound pressure level	Cooling	High		dB(A)	46	46	49	48			
Operation range	Cooling	Ambient	Min.~Max.	°CDB						-10 ~ 46	
	Heating	Ambient	Min.~Max.	°CWB						-15 ~ 18	
Refrigerant	Type									R-32	
	Charge			kg	0,76				1,3		
				TCO ₂ eq	0,51				0,88		
Piping connections	Liquid	OD		mm	6,35				6,4		
	Gas	OD		mm	9,5				12,7		
Piping length	OU - IU	Max.		m	20				30		
	System	Chargeless		m						10	
				Additional refrigerant charge	0,02 (for piping length exceeding 10m)						
		Level difference IU - OU	Max.	m	15				20		
Power supply	Phase / Frequency / Voltage			Hz / V	1~ / 50 / 220-240						
	Current - 50Hz	Maximum fuse amps (MFA)		A	10	13			16		

EER/COP according to Eurovent 2012, for outside EU only.

MFA is used to select the circuit breaker and the ground fault circuit interrupter (earth leakage circuit breaker).

Contains fluorinated greenhouse gases.

Actual refrigerant charge depends on the final unit construction, details can be found on the unit labels.

Preliminary data



DAIKIN AIRCONDITIONING CENTRAL EUROPE HandelsGmbH

campus 21, Europaring F12/402, A-2345 Brunn am Gebirge · Tel.: +43 / 2236 / 32557 · Fax: +43 / 2236 / 32557-910 · e-mail: office@daikin.at · www.daikin-ce.com

Daikin products are distributed by:



Daikin Europe N.V. participates in the Eurovent Certification programme for Air conditioners (AC), Liquid Chilling Packages (LCP), Air handling units (AHU) and Fan coil units (FCU). Check ongoing validity of certificate online: www.eurovent-certification.com or using: www.certiflash.com

The present publication is drawn up by way of information only and does not constitute an offer binding upon Daikin Europe N.V. / Daikin Central Europe HandelsGmbH. Daikin Europe N.V. / Daikin Central Europe HandelsGmbH have compiled the content of this publication to the best of their knowledge. No express or implied warranty is given for the completeness, accuracy, reliability or fitness for particular purpose of its content and the products and services presented therein. Specifications are subject to change without prior notice. Daikin Europe N.V. / Daikin Central Europe HandelsGmbH explicitly rejects any liability for any direct or indirect damage, in the broadest sense, arising from or related to the use and/or interpretation of this publication. All content is copyrighted by Daikin Europe N.V.

DACE Stylish Brochure | Version March 2018
We reserve the right for printing errors and model changes